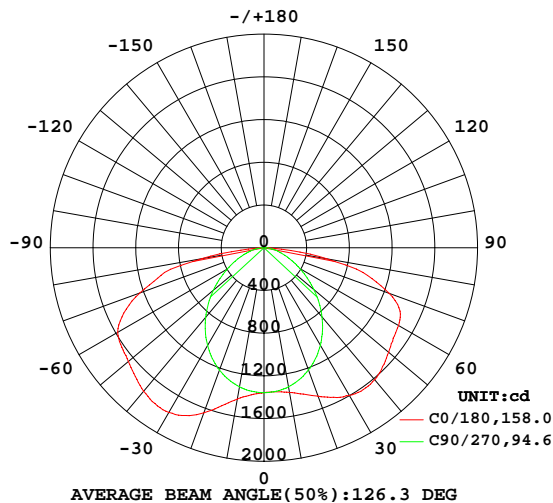


LUMINAIRE PHOTOMETRIC TEST REPORT

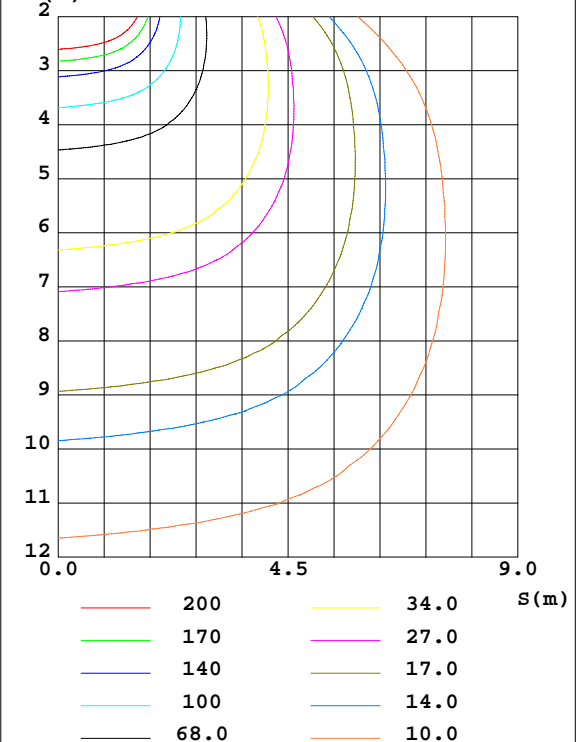
Test:U:229.65V I:0.2966A P:67.778W PF:0.9950 Freq:49.99Hz Lamp Flux:5916.1x1 lm		
NAME:	TYPE:	WEIGHT:
SPEC.:	DIM.: 1650*48*77	SERIAL No.:
MFR.:	SUR.:1.2*0.021	Shielding Angle:

DATA OF LAMP		PHOTOMETRIC DATA Eff: 87.29 lm/W			
MODEL		Imax(cd)	1788	S/MH(C0/180)	1.87
NOMINAL POWER(W)	70	LOR(%)	100.0	S/MH(C90/270)	1.17
RATED VOLTAGE(V)	230.0	TOTAL FLUX(lm)	5916.1	η UP,DN(C0-180)	0.0,49.7
NOMINAL FLUX(lm)	5916.1	CIE CLASS	DIRECT	η UP,DN(C180-360)	0.0,50.3
LAMPS INSIDE	1	η up(%)	0.0	CIBSE SHR NOM	1.50
TEST VOLTAGE(V)	230.0	η down(%)	100.0	CIBSE SHR MAX	1.55

LUMINOUS INTENSITY DISTRIBUTION DIAGRAM



C0 PLANE ISOLUX DIAGRAM (UNIT:lx)



C Range: 0 - 360DEG
C Interval: 22.5DEG
Test Speed: HIGH
Temperature:25.3DEG
Operators:
Test Date:2025-09-29

γ Range: 0 - 90DEG
 γ Interval: 1.0DEG
Test System:EVERFINE GO-2000A_V1 SYSTEM V2.0.406.10
Humidity:65.0%
Test Distance:11.700m [K=1.0000]
Remarks:

ZONAL FLUX DIAGRAM

ZONAL FLUX DIAGRAM:

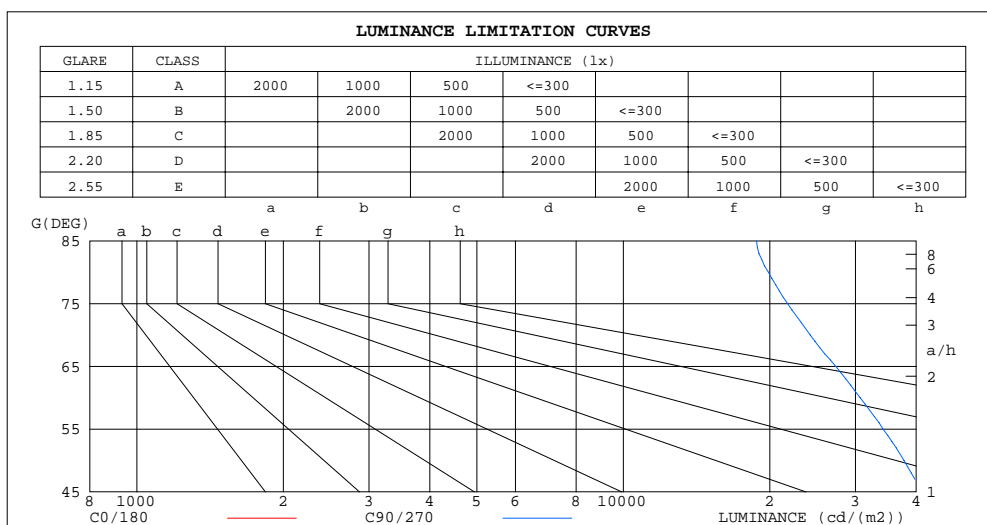
γ	C0	C45	C90	C135	C180	C225	C270	C315	γ	Φ zone	Φ total	$\%lum, lamp$
10	1375	1344	1321	1383	1438	1382	1322	1344	0- 10	129.9	129.9	2.2,2.2
20	1479	1346	1217	1435	1644	1433	1219	1348	10- 20	390.5	520.4	8.8,8.8
30	1598	1354	1055	1507	1782	1502	1056	1359	20- 30	647.2	1168	19.7,19.7
40	1613	1352	845.0	1488	1753	1513	849.2	1356	30- 40	860.2	2028	34.3,34.3
50	1524	1288	611.6	1408	1658	1426	619.5	1294	40- 50	983.3	3011	50.9,50.9
60	1456	1141	386.4	1241	1582	1242	395.0	1142	50- 60	1006	4017	67.9,67.9
70	1246	934.8	208.7	1037	1234	1022	215.3	938.1	60- 70	940.1	4957	83.8,83.8
80	593.8	676.3	86.93	707.4	592.1	711.4	88.87	685.0	70- 80	714.6	5672	95.9,95.9
90	13.59	23.92	8.711	52.60	15.15	45.76	9.648	18.75	80- 90	244.1	5916	100,100
100									90-100			
110									100-110			
120									110-120			
130									120-130			
140									130-140			
150									140-150			
160									150-160			
170									160-170			
180									170-180			
DEG	LUMINOUS INTENSITY:cd									UNIT:lm		

C Range: 0 - 360DEG
C Interval: 22.5DEG
Test Speed: HIGH
Temperature:25.3DEG
Operators:
Test Date:2025-09-29

γ Range: 0 - 90DEG
 γ Interval: 1.0DEG
Test System:EVERFINE GO-2000A_V1 SYSTEM V2.0.406.10
Humidity:65.0%
Test Distance:11.700m [K=1.0000]
Remarks:

LUMINANCE LIMITATION CURVES

Test:U:229.65V I:0.2966A P:67.778W PF:0.9950 Freq:49.99Hz Lamp Flux:5916.1x1 lm		
NAME:	TYPE:	WEIGHT:
SPEC.:	DIM.: 1650*48*77	SERIAL No.:
MFR.:	SUR.:1.2*0.021	Shielding Angle:



LUMINANCE cd/(m2)		
G(DEG)	C0/180	C90/270
85	74721	18784
80	135697	19865
75	154091	21761
70	144534	24210
65	132057	27335
60	115587	30668
55	102193	34184
50	94093	37754
45	88175	40923

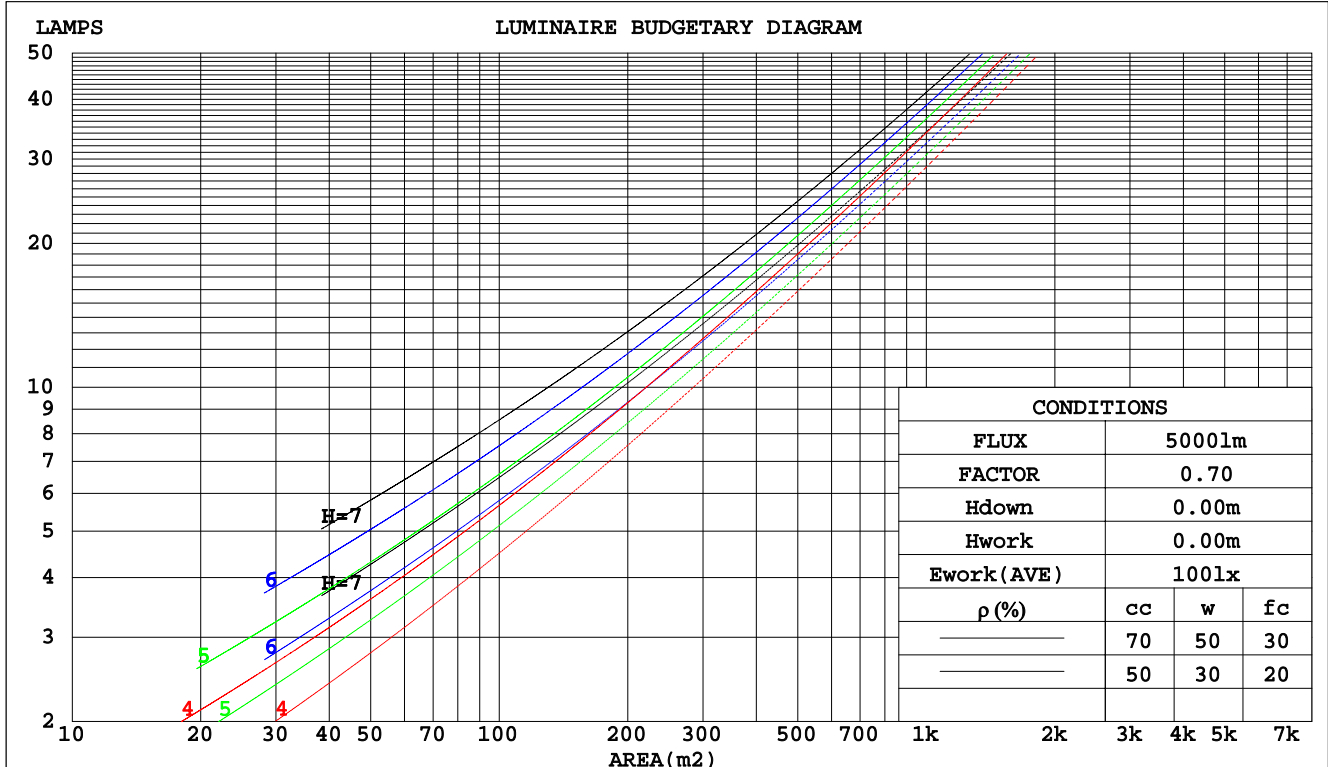
C Range: 0 - 360DEG
C Interval: 22.5DEG
Test Speed: HIGH
Temperature:25.3DEG
Operators:
Test Date:2025-09-29

γ Range: 0 - 90DEG
 γ Interval: 1.0DEG
Test System:EVERFINE GO-2000A_V1 SYSTEM V2.0.406.10
Humidity:65.0%
Test Distance:11.700m [K=1.0000]
Remarks:

CU AND LUMINAIRE BUDGETARY ESTIMATE DIAGRAM

Test:U:229.65V I:0.2966A P:67.778W PF:0.9950 Freq:49.99Hz Lamp Flux:5916.1x1 lm		
NAME:	TYPE:	WEIGHT:
SPEC.:	DIM.: 1650*48*77	SERIAL No.:
MFR.:	SUR.:1.2*0.021	Shielding Angle:

pcc	80%			70%			50%			30%			10%			0
pw	50%	30%	10%	50%	30%	10%	50%	30%	10%	50%	30%	10%	50%	30%	10%	0
pfc	20%			20%			20%			20%			20%			0
RCR	RCR:Room Cavity Ratio			Coefficients of Utilization(CU)												
0.0	1.19	1.19	1.19	1.16	1.16	1.16	1.11	1.11	1.11	1.06	1.06	1.06	1.02	1.02	1.02	1.00
1.0	1.01	.95	.91	.98	.94	.89	.94	.90	.86	.90	.87	.84	.86	.84	.81	.79
2.0	.86	.78	.71	.84	.76	.70	.80	.74	.68	.77	.71	.67	.73	.69	.65	.63
3.0	.74	.64	.57	.72	.63	.56	.69	.62	.55	.66	.60	.54	.63	.58	.53	.51
4.0	.64	.55	.47	.63	.54	.47	.60	.52	.46	.58	.51	.45	.56	.50	.45	.42
5.0	.57	.47	.40	.56	.46	.39	.53	.45	.39	.51	.44	.38	.49	.43	.38	.36
6.0	.51	.41	.34	.50	.41	.34	.48	.40	.33	.46	.39	.33	.44	.38	.33	.31
7.0	.46	.36	.30	.45	.36	.29	.43	.35	.29	.42	.34	.29	.40	.34	.29	.27
8.0	.41	.32	.26	.41	.32	.26	.39	.31	.26	.38	.31	.26	.37	.30	.25	.23
9.0	.38	.29	.23	.37	.29	.23	.36	.28	.23	.35	.28	.23	.34	.27	.23	.21
10.0	.35	.26	.21	.34	.26	.21	.33	.26	.21	.32	.25	.20	.31	.25	.20	.19



C Range: 0 - 360DEG
C Interval: 22.5DEG
Test Speed: HIGH
Temperature:25.3DEG
Operators:
Test Date:2025-09-29

γ Range: 0 - 90DEG
γ Interval: 1.0DEG
Test System:EVERFINE GO-2000A_V1 SYSTEM V2.0.406.10
Humidity:65.0%
Test Distance:11.700m [K=1.0000]
Remarks:

WEC AND CCEC

Test:U:229.65V I:0.2966A P:67.778W PF:0.9950 Freq:49.99Hz Lamp Flux:5916.1x1 lm								
NAME:			TYPE:			WEIGHT:		
SPEC.:			DIM.: 1650*48*77			SERIAL No.:		
MFR.:			SUR.:1.2*0.021			Shielding Angle:		

pcc	80%			70%			50%			30%			10%			0	
pw	50%	30%	10%	50%	30%	10%	50%	30%	10%	50%	30%	10%	50%	30%	10%	0	
pfc	20%			20%			20%			20%			20%			0	
RCR	RCR:Room Cavity Ratio						Wall Exitance Coefficients(WEC)										
0.0																	
1.0	.372	.212	.067	.365	.208	.066	.351	.201	.064	.339	.195	.063	.327	.190	.061		
2.0	.338	.185	.057	.332	.183	.056	.320	.178	.055	.309	.173	.054	.298	.169	.053		
3.0	.306	.163	.049	.300	.161	.048	.289	.157	.048	.279	.153	.047	.270	.150	.046		
4.0	.277	.144	.042	.272	.142	.042	.263	.139	.042	.254	.136	.041	.245	.133	.041		
5.0	.253	.129	.037	.248	.128	.037	.240	.125	.037	.232	.122	.036	.225	.120	.036		
6.0	.232	.116	.033	.228	.115	.033	.220	.113	.033	.213	.111	.033	.207	.109	.032		
7.0	.214	.106	.030	.210	.105	.030	.204	.103	.030	.197	.101	.029	.191	.099	.029		
8.0	.198	.097	.027	.195	.096	.027	.189	.095	.027	.184	.093	.027	.178	.091	.027		
9.0	.185	.089	.025	.182	.089	.025	.177	.087	.025	.171	.086	.025	.167	.085	.024		
10.0	.173	.083	.023	.170	.082	.023	.165	.081	.023	.161	.080	.023	.157	.079	.023		

pcc	80%			70%			50%			30%			10%			0	
pw	50%	30%	10%	50%	30%	10%	50%	30%	10%	50%	30%	10%	50%	30%	10%	0	
pfc	20%			20%			20%			20%			20%			0	
RCR	RCR:Room Cavity Ratio						Ceiling Cavity Exitance Coefficients(CCEC)										
0.0	.190	.190	.190	.163	.163	.163	.111	.111	.111	.064	.064	.064	.020	.020	.020		
1.0	.185	.156	.129	.158	.134	.111	.108	.092	.077	.062	.053	.045	.020	.017	.014		
2.0	.178	.132	.092	.153	.113	.080	.105	.078	.056	.060	.046	.033	.019	.015	.011		
3.0	.171	.115	.069	.147	.099	.060	.101	.069	.042	.058	.040	.025	.019	.013	.008		
4.0	.164	.102	.054	.141	.088	.047	.097	.061	.033	.056	.036	.020	.018	.012	.006		
5.0	.156	.091	.044	.134	.079	.038	.092	.055	.027	.053	.032	.016	.017	.011	.005		
6.0	.148	.083	.036	.128	.072	.032	.088	.050	.022	.051	.030	.013	.016	.010	.004		
7.0	.141	.076	.031	.121	.066	.027	.084	.046	.019	.049	.027	.011	.016	.009	.004		
8.0	.134	.071	.027	.116	.061	.024	.080	.043	.017	.047	.025	.010	.015	.008	.003		
9.0	.128	.066	.024	.110	.057	.021	.076	.040	.015	.044	.024	.009	.014	.008	.003		
10.0	.122	.061	.021	.105	.053	.019	.073	.038	.013	.042	.022	.008	.014	.007	.003		

C Range: 0 - 360DEG
 C Interval: 22.5DEG
 Test Speed: HIGH
 Temperature:25.3DEG
 Operators:
 Test Date:2025-09-29

γ Range: 0 - 90DEG
 γ Interval: 1.0DEG
 Test System:EVERFINE GO-2000A_V1 SYSTEM V2.0.406.10
 Humidity:65.0%
 Test Distance:11.700m [K=1.0000]
 Remarks:

UGR(Unified Glare Rating) Table

Test:U:229.65V I:0.2966A P:67.778W PF:0.9950 Freq:49.99Hz Lamp Flux:5916.1x1 lm											
NAME:					TYPE:			WEIGHT:			
SPEC.:					DIM.: 1650*48*77			SERIAL No.:			
MFR.:					SUR.:1.2*0.021			Shielding Angle:			
ceiling/cavity	0.7	0.7	0.5	0.5	0.3	0.7	0.7	0.5	0.5	0.3	
walls	0.5	0.3	0.5	0.3	0.3	0.5	0.3	0.5	0.3	0.3	
working plane	0.2	0.2	0.2	0.2	0.2	0.2	0.2	0.2	0.2	0.2	
Room dimensions		Viewed crosswise				Viewed endwise					
x = 2H y = 2H	30.1	31.7	30.4	32.0	32.2	25.1	26.7	25.3	26.9	27.2	
	32.9	34.5	33.3	34.7	35.0	26.0	27.5	26.3	27.8	28.0	
	34.2	35.7	34.5	36.0	36.2	26.3	27.8	26.6	28.0	28.3	
	35.1	36.5	35.5	36.8	37.1	26.5	27.9	26.9	28.2	28.5	
	35.3	36.7	35.7	37.0	37.3	26.6	28.0	26.9	28.2	28.5	
	35.4	36.7	35.8	37.0	37.4	26.6	27.9	27.0	28.2	28.6	
4H	2H	30.6	32.1	31.0	32.4	32.7	27.4	28.9	27.7	29.1	29.4
	3H	33.8	35.1	34.1	35.4	35.7	28.6	29.9	29.0	30.2	30.5
	4H	35.3	36.5	35.7	36.8	37.2	29.0	30.2	29.4	30.6	30.9
	6H	36.4	37.5	36.8	37.8	38.2	29.3	30.4	29.7	30.7	31.1
	8H	36.7	37.7	37.1	38.1	38.5	29.4	30.4	29.8	30.8	31.2
	12H	36.8	37.8	37.2	38.1	38.6	29.4	30.4	29.9	30.8	31.2
8H	4H	35.6	36.6	36.0	37.0	37.4	31.0	32.0	31.4	32.4	32.8
	6H	36.9	37.8	37.4	38.2	38.6	31.6	32.5	32.1	32.9	33.3
	8H	37.4	38.2	37.8	38.6	39.0	31.8	32.6	32.3	33.0	33.4
	12H	37.6	38.3	38.1	38.7	39.2	31.9	32.6	32.4	33.0	33.5
12H	4H	35.6	36.5	36.0	36.9	37.3	31.4	32.3	31.8	32.7	33.1
	6H	37.1	37.8	37.5	38.2	38.7	32.4	33.1	32.8	33.6	34.0
	8H	37.6	38.2	38.1	38.7	39.2	32.7	33.4	33.2	33.8	34.3
Variations with the observer position at spacings:											
S = 1.0H	+ 0.1 / - 0.1					+ 0.1 / - 0.2					
1.5H	+ 0.1 / - 0.2					+ 0.2 / - 0.3					
2.0H	+ 0.2 / - 0.3					+ 0.4 / - 0.5					

CIE Pub.117, 5916 lm Total Lamp Luminous Flux Corrected ($8\log(F/F_0) = 6.2$)

C Range: 0 - 360DEG
 C Interval: 22.5DEG
 Test Speed: HIGH
 Temperature: 25.3DEG
 Operators:
 Test Date: 2025-09-29

γ Range: 0 - 90DEG
 γ Interval: 1.0DEG
 Test System: EVERFINE GO-2000A_V1 SYSTEM V2.0.406.10
 Humidity: 65.0%
 Test Distance: 11.700m [K=1.0000]
 Remarks:

UTILIZATION FACTORS TABLE

Test:U:229.65V I:0.2966A P:67.778W PF:0.9950 Freq:49.99Hz Lamp Flux:5916.1x1 lm		
NAME:	TYPE:	WEIGHT:
SPEC.:	DIM.: 1650*48*77	SERIAL No.:
MFR.:	SUR.:1.2*0.021	Shielding Angle:

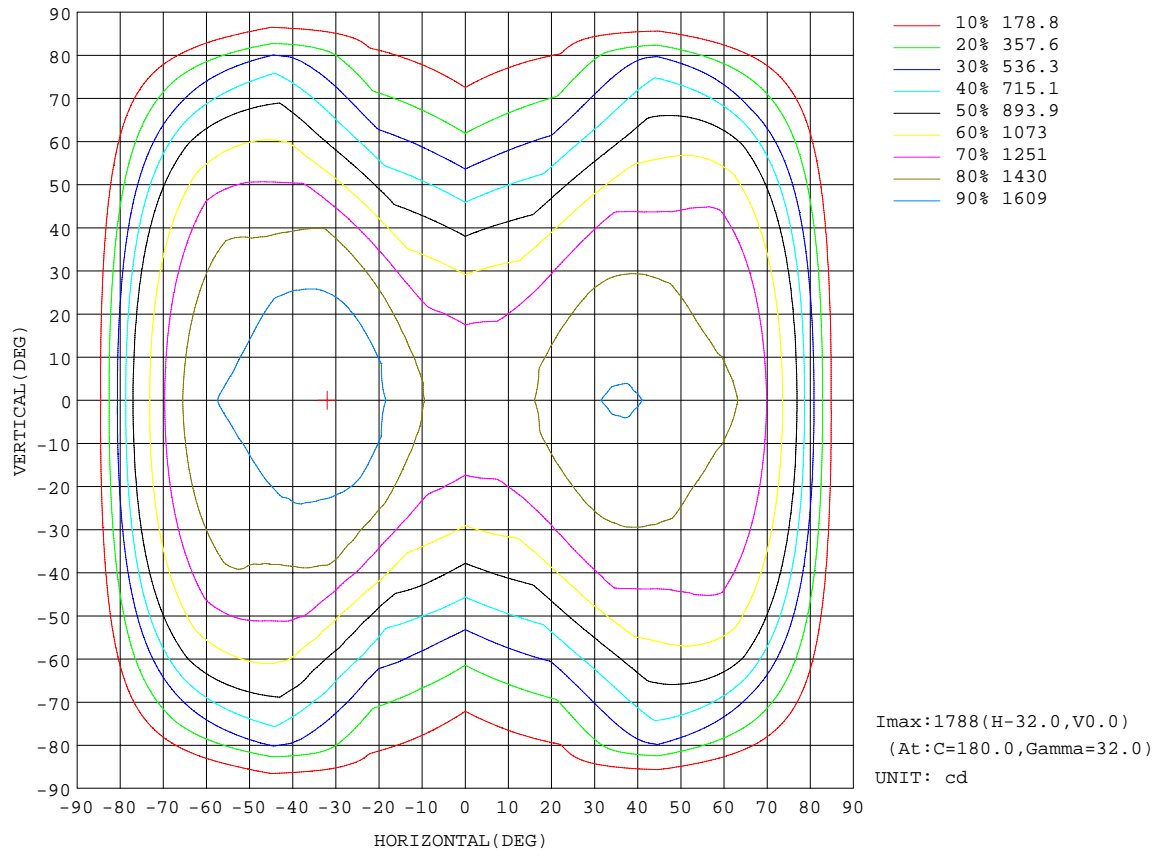
REFLECTANCE										
Ceiling	0.8	0.8	0.8	0.7	0.7	0.7	0.5	0.5	0.5	0
Walls	0.7	0.5	0.3	0.7	0.5	0.3	0.7	0.5	0.3	0
Working plane	0.2	0.2	0.2	0.2	0.2	0.2	0.2	0.2	0.2	0
ROOM INDEX	UTILIZATION FACTORS(PERCENT) $k(RI) \times RCR = 5$									
$k = 0.60$	52	39	32	51	39	32	50	39	32	25
0.80	62	49	41	61	48	40	59	47	40	32
1.00	70	57	49	69	57	49	66	59	48	40
1.25	77	65	57	76	64	57	73	63	56	48
1.50	83	71	63	81	70	62	78	68	61	53
2.00	90	80	72	88	79	72	84	77	70	61
2.50	95	86	78	93	84	78	88	81	76	66
3.00	99	90	84	96	89	83	92	86	81	71
4.00	103	96	91	101	95	89	96	91	87	77
5.00	106	100	95	104	98	94	99	95	91	81
ROOM INDEX	UF(total)									Direct
According to DIN EN 13032-2 2004			Suspended					SHRNOM = 1.25		

C Range: 0 - 360DEG
C Interval: 22.5DEG
Test Speed: HIGH
Temperature:25.3DEG
Operators:
Test Date:2025-09-29

γ Range: 0 - 90DEG
 γ Interval: 1.0DEG
Test System:EVERFINE GO-2000A_V1 SYSTEM V2.0.406.10
Humidity:65.0%
Test Distance:11.700m [K=1.0000]
Remarks:

ISOCANDELA DIAGRAM

Test:U:229.65V I:0.2966A P:67.778W PF:0.9950 Freq:49.99Hz Lamp Flux:5916.1x1 lm		
NAME:	TYPE:	WEIGHT:
SPEC.:	DIM.: 1650*48*77	SERIAL No.:
MFR.:	SUR.:1.2*0.021	Shielding Angle:

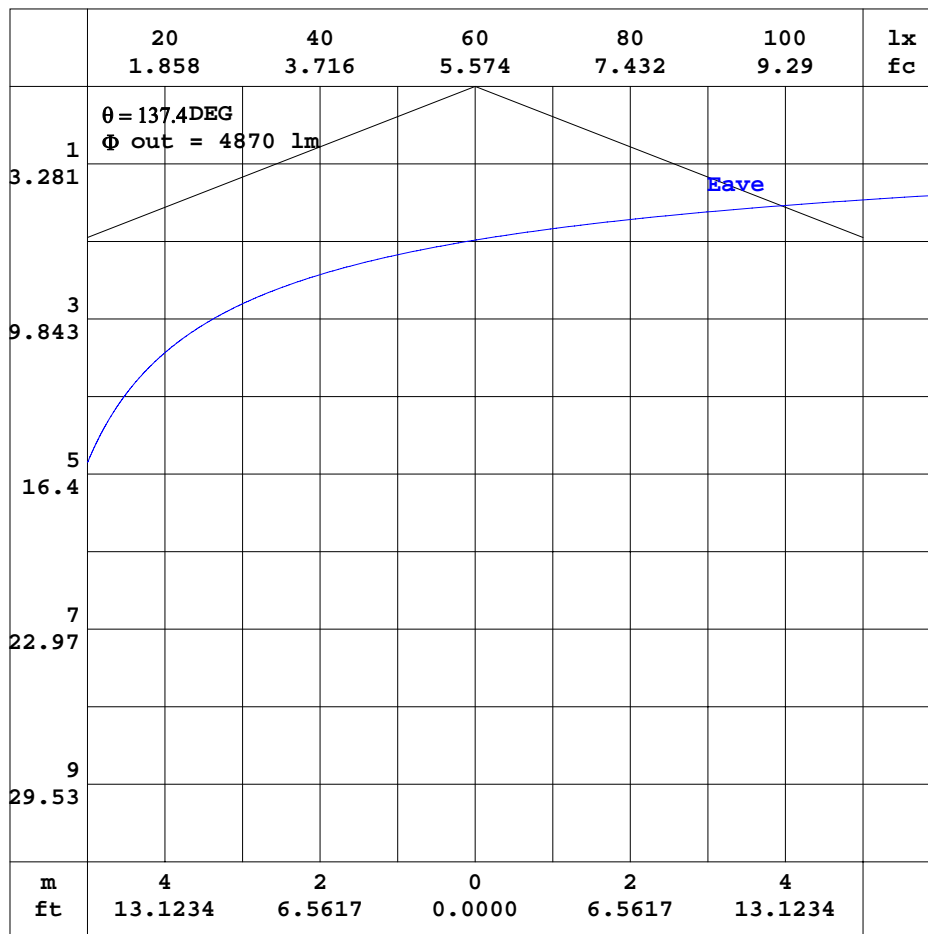


C Range: 0 - 360DEG
C Interval: 22.5DEG
Test Speed: HIGH
Temperature:25.3DEG
Operators:
Test Date:2025-09-29

γ Range: 0 - 90DEG
 γ Interval: 1.0DEG
Test System:EVERFINE GO-2000A_V1 SYSTEM V2.0.406.10
Humidity:65.0%
Test Distance:11.700m [K=1.0000]
Remarks:

AAI CURVES

Test:U:229.65V I:0.2966A P:67.778W PF:0.9950 Freq:49.99Hz Lamp Flux:5916.1x1 lm		
NAME:	TYPE:	WEIGHT:
SPEC.:	DIM.: 1650*48*77	SERIAL No.:
MFR.:	SUR.:1.2*0.021	Shielding Angle:



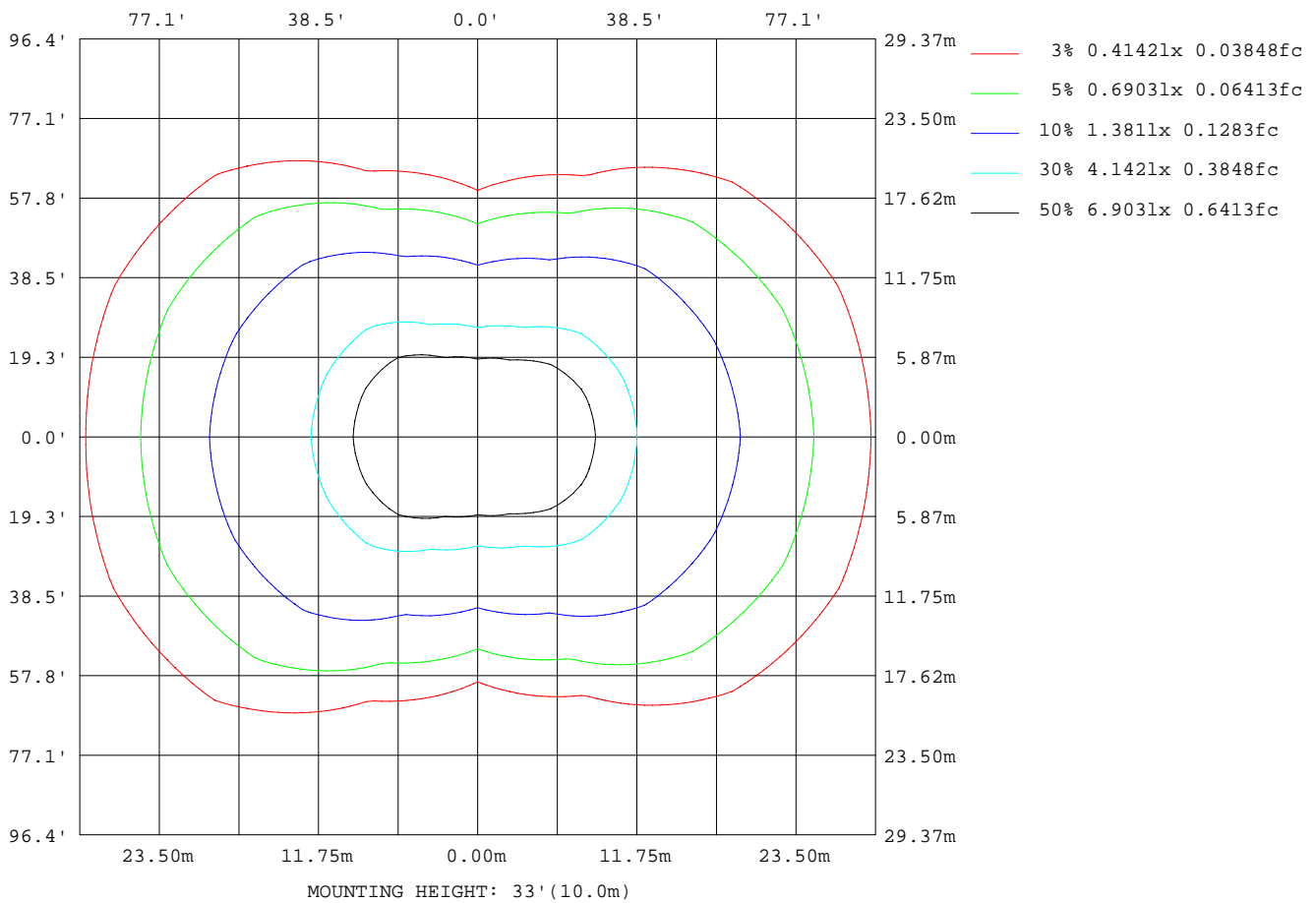
Note:The Curves indicate the illuminated area and the average illumination when the luminaire is at different distance.

C Range: 0 - 360DEG
C Interval: 22.5DEG
Test Speed: HIGH
Temperature:25.3DEG
Operators:
Test Date:2025-09-29

γ Range: 0 - 90DEG
 γ Interval: 1.0DEG
 γ Test System:EVERFINE GO-2000A_V1 SYSTEM V2.0.406.10
Humidity:65.0%
Test Distance:11.700m [K=1.0000]
Remarks:

ISOLUX DIAGRAM

Test:U:229.65V I:0.2966A P:67.778W PF:0.9950 Freq:49.99Hz Lamp Flux:5916.1x1 lm		
NAME:	TYPE:	WEIGHT:
SPEC.:	DIM.: 1650*48*77	SERIAL No.:
MFR.:	SUR.:1.2*0.021	Shielding Angle:



C Range: 0 - 360DEG
C Interval: 22.5DEG
Test Speed: HIGH
Temperature: 25.3DEG
Operators:
Test Date: 2025-09-29

γ Range: 0 - 90DEG
 γ Interval: 1.0DEG
Test System: EVERFINE GO-2000A_V1 SYSTEM V2.0.406.10
Humidity: 65.0%
Test Distance: 11.700m [K=1.0000]
Remarks:

LED Avg.L Report

Test:U:229.65V I:0.2966A P:67.778W PF:0.9950 Freq:49.99Hz Lamp Flux:5916.1x1 lm		
NAME:	TYPE:	WEIGHT:
SPEC.:	DIM.: 1650*48*77	SERIAL No.:
MFR.:	SUR.:1.2*0.021	Shielding Angle:

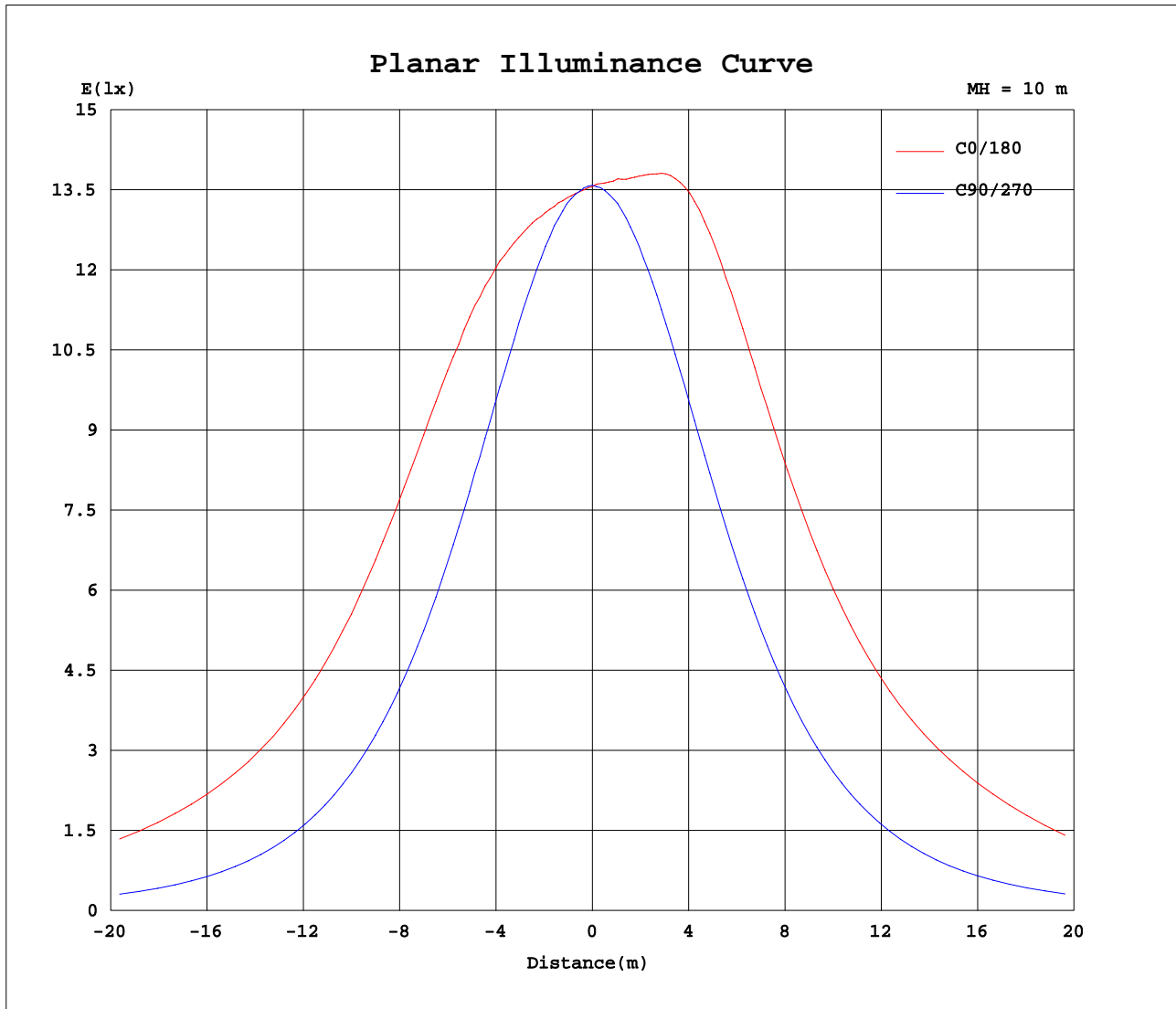
AvgL	cd/m2
L_0~180(65)av	134052
L_0~180(75)av	153530
L_0~180(85)av	70518
L_90~270(65)av	27693
L_90~270(75)av	22078
L_90~270(85)av	19120
L_45(65)av	102182
L_45(75)av	130982
L_45(85)av	150163

Standard: GB/T 29293-2012

C Range: 0 - 360DEG
C Interval: 22.5DEG
Test Speed: HIGH
Temperature:25.3DEG
Operators:
Test Date:2025-09-29

γ Range: 0 - 90DEG
γ Interval: 1.0DEG
Test System:EVERFINE GO-2000A_V1 SYSTEM V2.0.406.10
Humidity:65.0%
Test Distance:11.700m [K=1.0000]
Remarks:

Planar Illuminance Curve



C Range: 0 - 360DEG
C Interval: 22.5DEG
Test Speed: HIGH
Temperature: 25.3DEG
Operators:
Test Date: 2025-09-29

γ Range: 0 - 90DEG
 γ Interval: 1.0DEG
Test System: EVERFINE GO-2000A_V1 SYSTEM V2.0.406.10
Humidity: 65.0%
Test Distance: 11.700m [K=1.0000]
Remarks:

```

γ Range: 0 - 90DEG
γ Interval: 1.0DEG
Test System:EVERFINE GO-2000A_V1 SYSTEM V2.0.406.10
Humidity:65.0%
Test Distance:11.700m [K=1.0000]
Remarks:

```